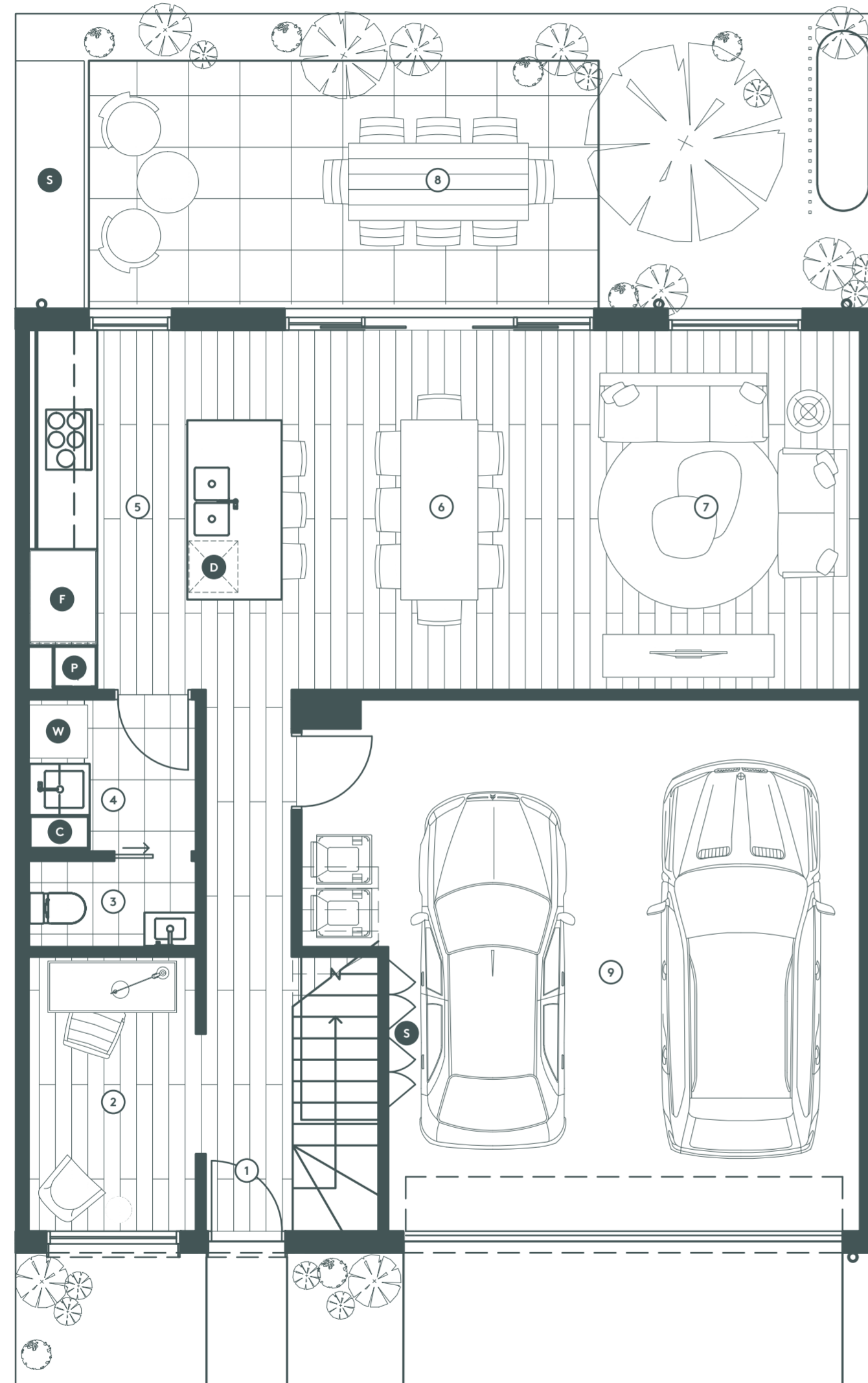




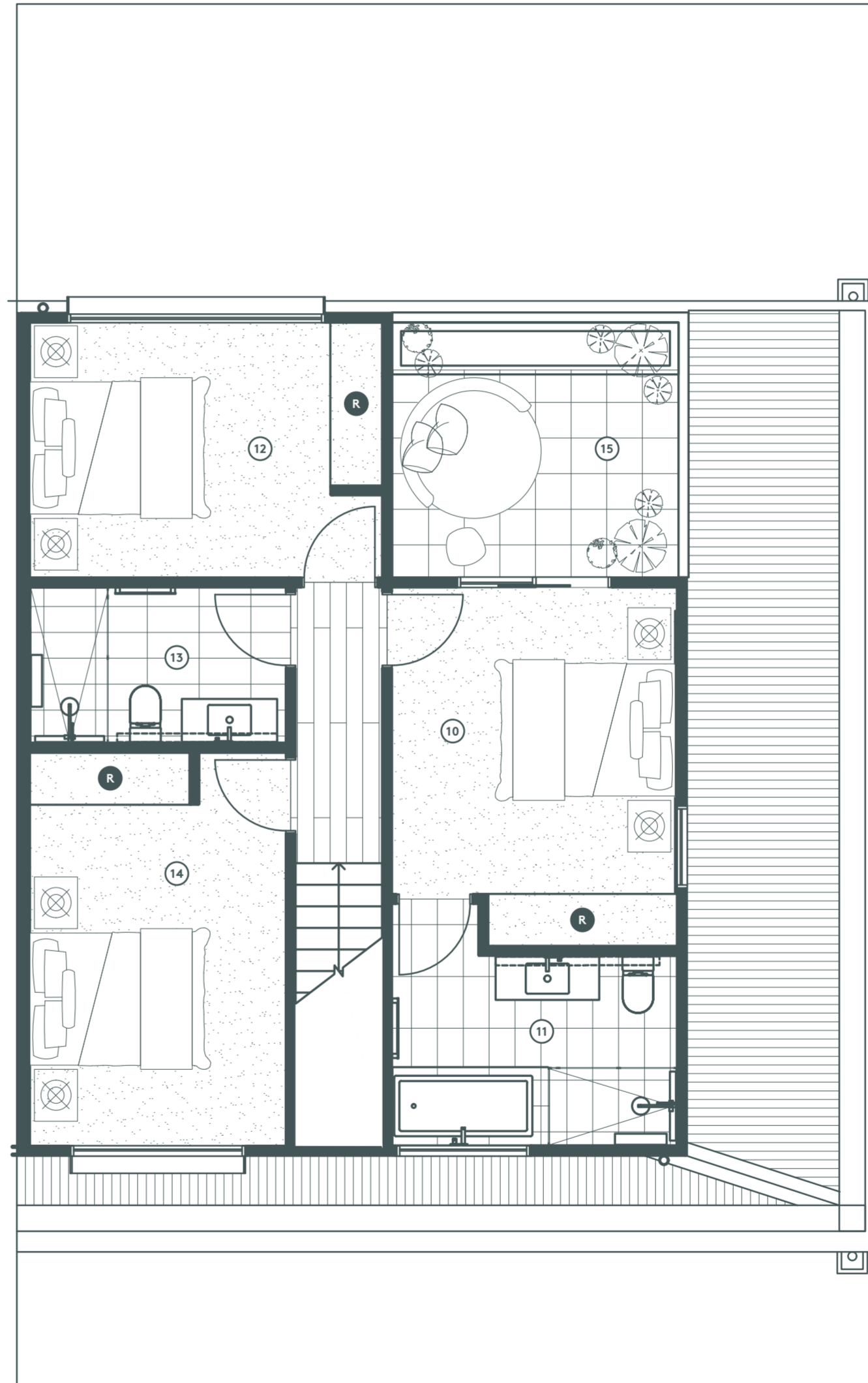
Townhouse Style E

- 3 bedrooms**
- 2.5 bathrooms**
- 1 study**
- 2 car spaces**

Ground Floor	73.3m ²	7.9 squares
First Floor	62.1m ²	6.6 squares
Garage	36.8m ²	4.0 squares
Interior Total	172.2m²	18.5 squares
Balcony	10.5m ²	1.1 squares



GROUND FLOOR



FIRST FLOOR

- 1 Entry
- 2 Study
- 3 Powder Room
- 4 Laundry
- 5 Kitchen (2.9 x 4.1m)
- 6 Dining Room (2.5 x 4.1m)
- 7 Living Room (4.2 x 4.1m)
- 8 Courtyard
- 9 Double Garage (5.5 x 6.2m)
- 10 Bedroom 1 (3.2 x 3.5m)
- 11 Ensuite
- 12 Bedroom 2 (3.4 x 3.0m)
- 13 Bathroom
- 14 Bedroom 3 (3.0 x 3.9m)
- 15 Balcony

- F Fridge*
- D Dishwasher
- P Pantry
- W Washing Machine*
- R Built In Robe
- S Storage
- C Cupboard



* Fridge and washing machine not included.
All drawings, layouts and area calculations are indicative only and are subject to approval by the relevant authorities and alterations due to design development. Drawings are not to be used for construction. All apartment and balcony areas are calculated as gross floor area in accordance with the Method of Measurement for Residential Property as published by the Property Council of Australia.

© Copyright Bruce Henderson Architects P/L